

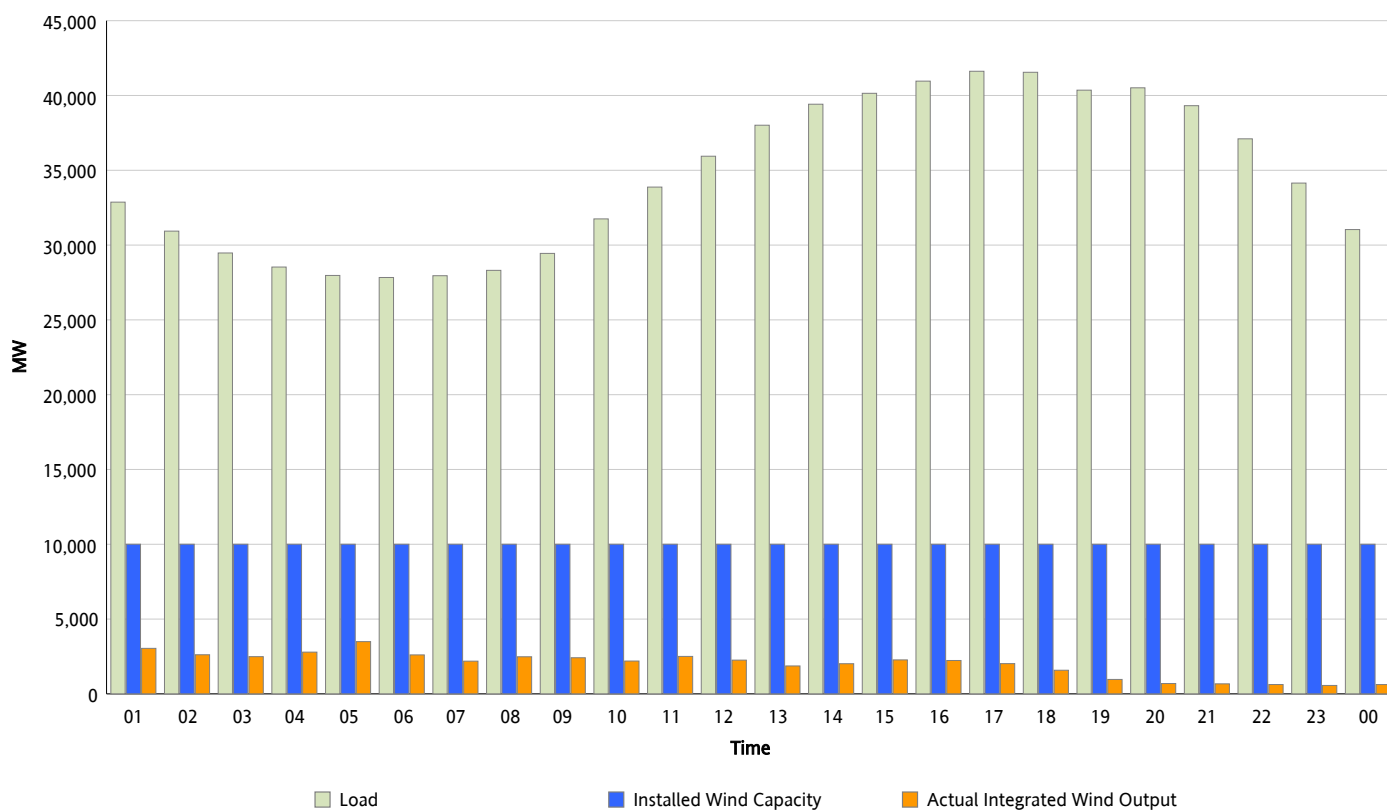


ERCOT Grid Operations

Wind Integration Report : 10/14/2012

Peak Load	41,620 MW
Load Peak Hour (HE)	17
Wind Over Peak	2,022 MW
Wind Record 06/19/12	8,368 MW
Max Wind Value*	3,746 MW
Wind Peak Time	04:40
Wind Integration %	13.43 %

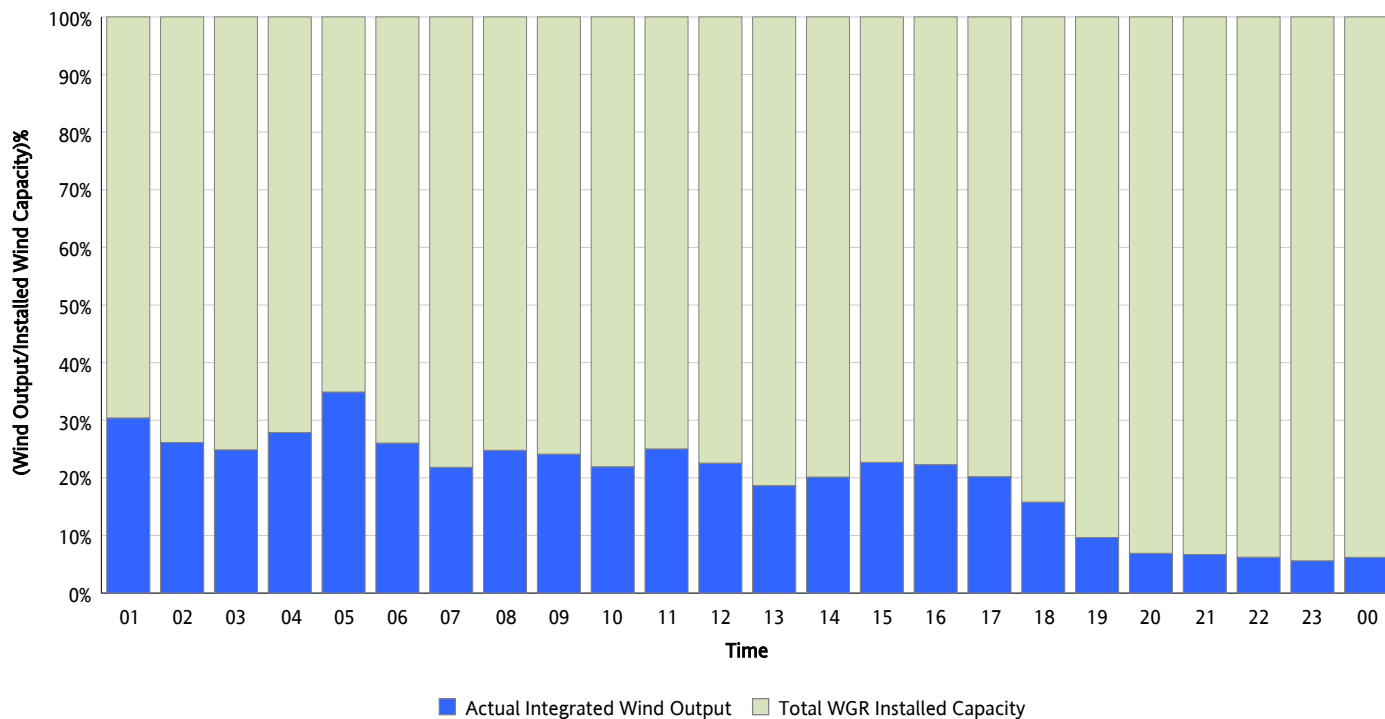
Hourly Average Actual Load vs. Actual Wind Output
10/14/2012



* Wind Record and Wind Max represent instantaneous values and the rest of the values are integrated over the hour

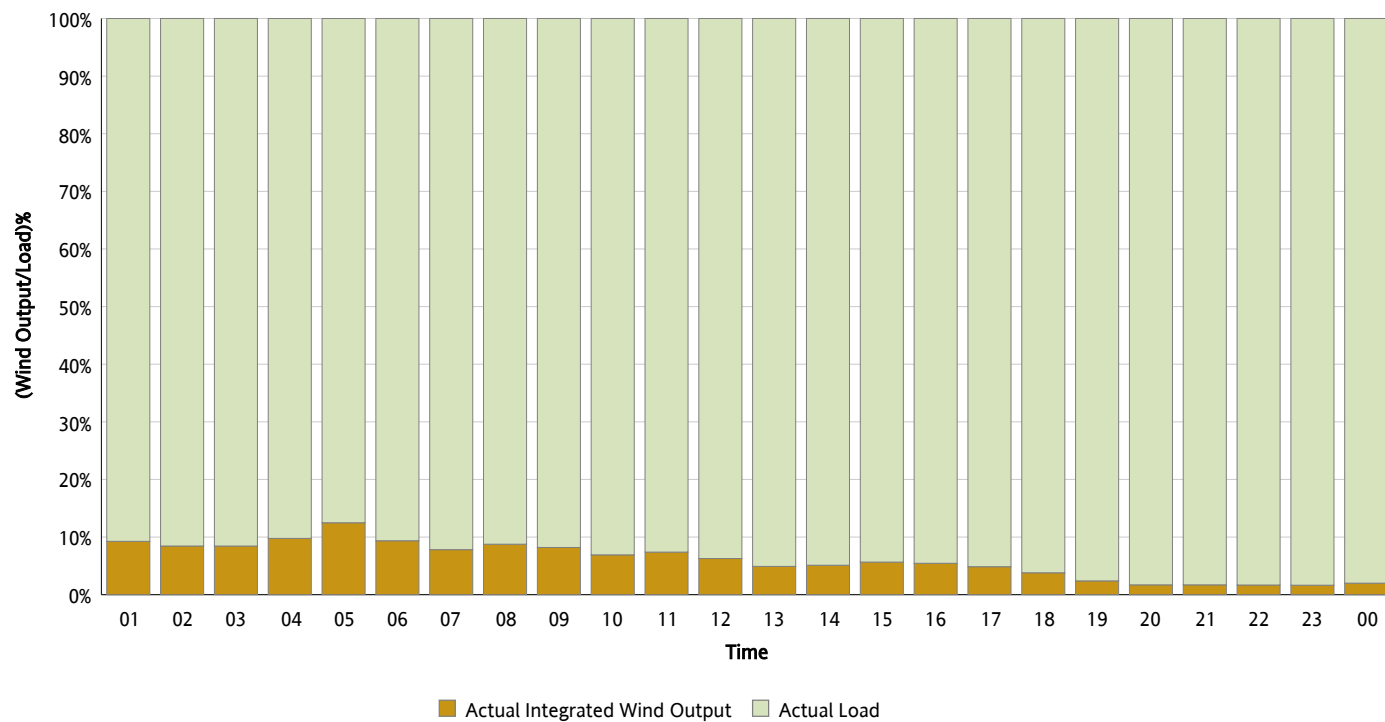
Actual Wind Output as a Percentage of the Total Installed Wind Capacity

10/14/2012



Actual Wind Output as a Percentage of the ERCOT Load

10/14/2012



ERCOT Load vs. Actual Wind Output

10/07/2012 - 10/14/2012

